

Fig. 1

The Contribution of Growth Factors and MMPs towards Airway Branching Morphogenesis

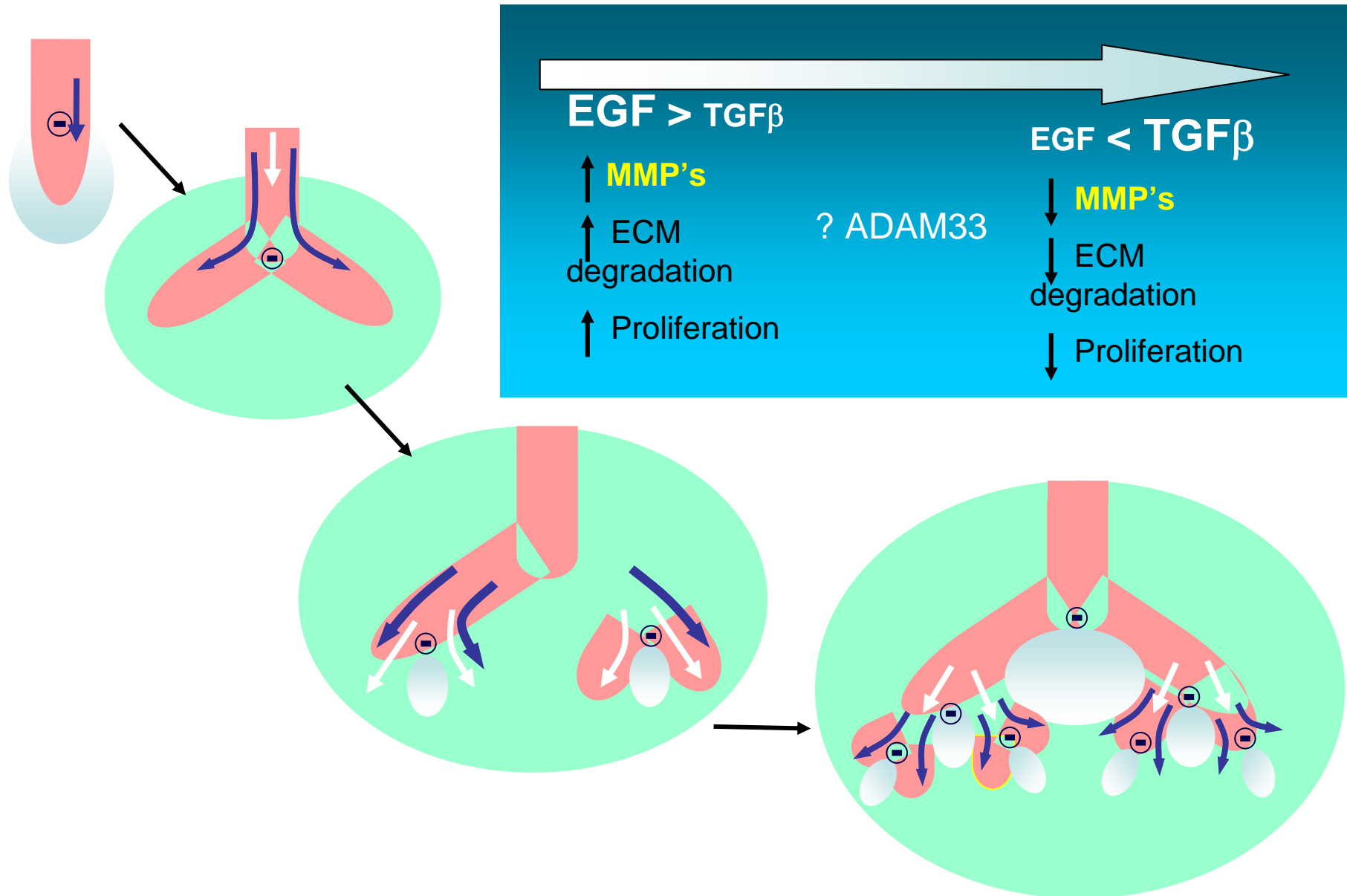


Fig. 2

**Inflammatory cell products
environmental agents**

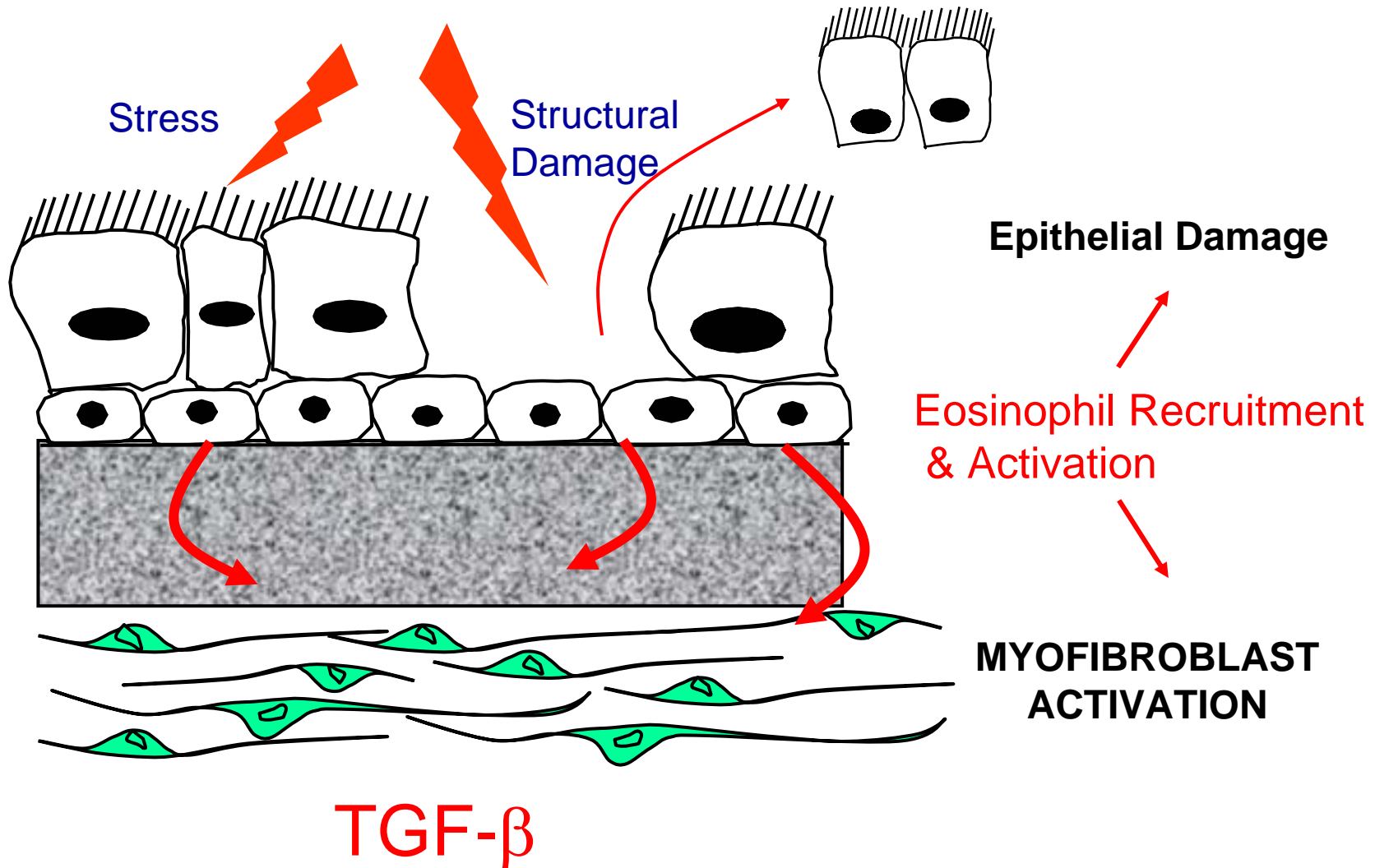
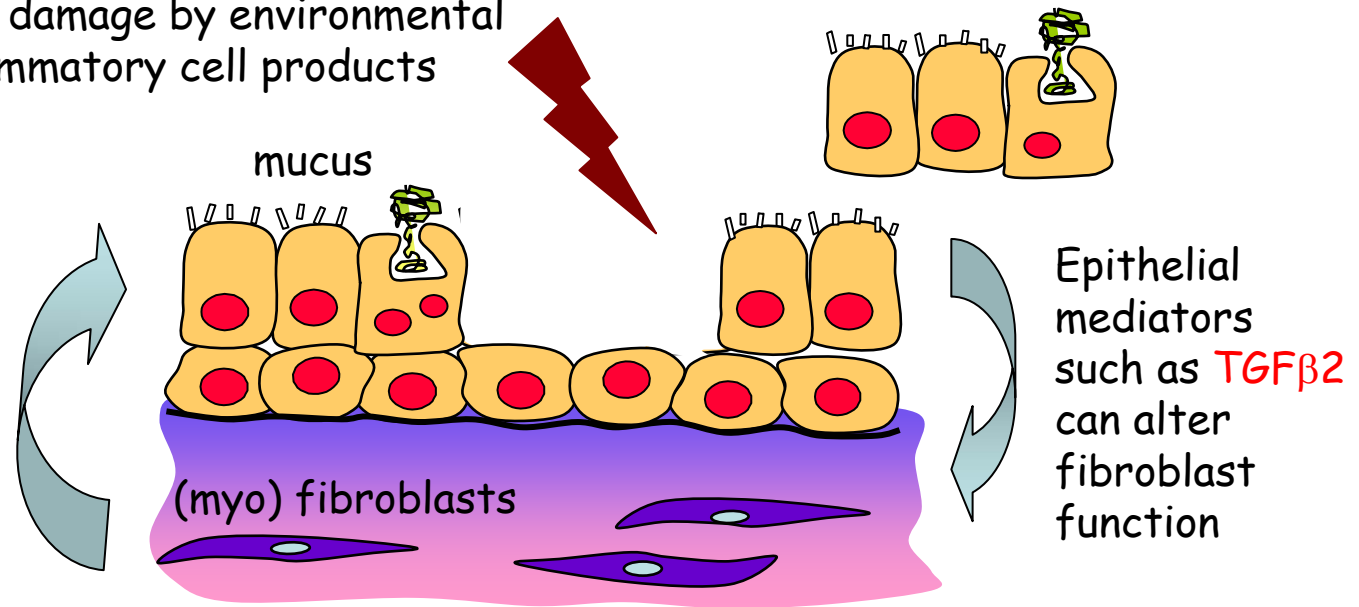


Fig. 3

The Epithelial-Mesenchymal Trophic Unit (EMTU)

Increased susceptibility of epithelium to damage by environmental agents and inflammatory cell products



More myofibroblasts releasing growth factors

Fig. 4

AIRWAY PATHOLOGY IN ASTHMA

