

Strategic Implementation Group

THIRD MEETING 16 AUGUST 2006

10.30 -12.00PM

Cathedral Room, Richmond House, London

The National Innovation Centre and the Innovation Landscape

Presentation to HITF SIG

16 August 2006

Why the National Innovation Centre (NIC) and Innovation Landscape ?



- 1998-2002 The Baker report, Wider Markets Initiative, DTI innovation Report, 2001
2001 The Health and Social Care Act – each Government Department should capture and capitalise on UK plc Intellectual Capital
- 2002 The Wanless Report – the NHS is slow at adopting new technologies
- 2004 HITF Report – recommendation to set up a National Innovation Centre (NIC)
(NIC) and innovation delivery networks
- April 2005, Lord Warner requested that HITF develop clear pathways for products
products from concept to widespread adoption, to promote faster adoption of
medical technologies in UK healthcare

The NIC: Mission and goals

To advise and support the NHS, industry and academia in speeding up the processes by which *technologies which can be applied to healthcare* are successfully identified, developed and brought into use

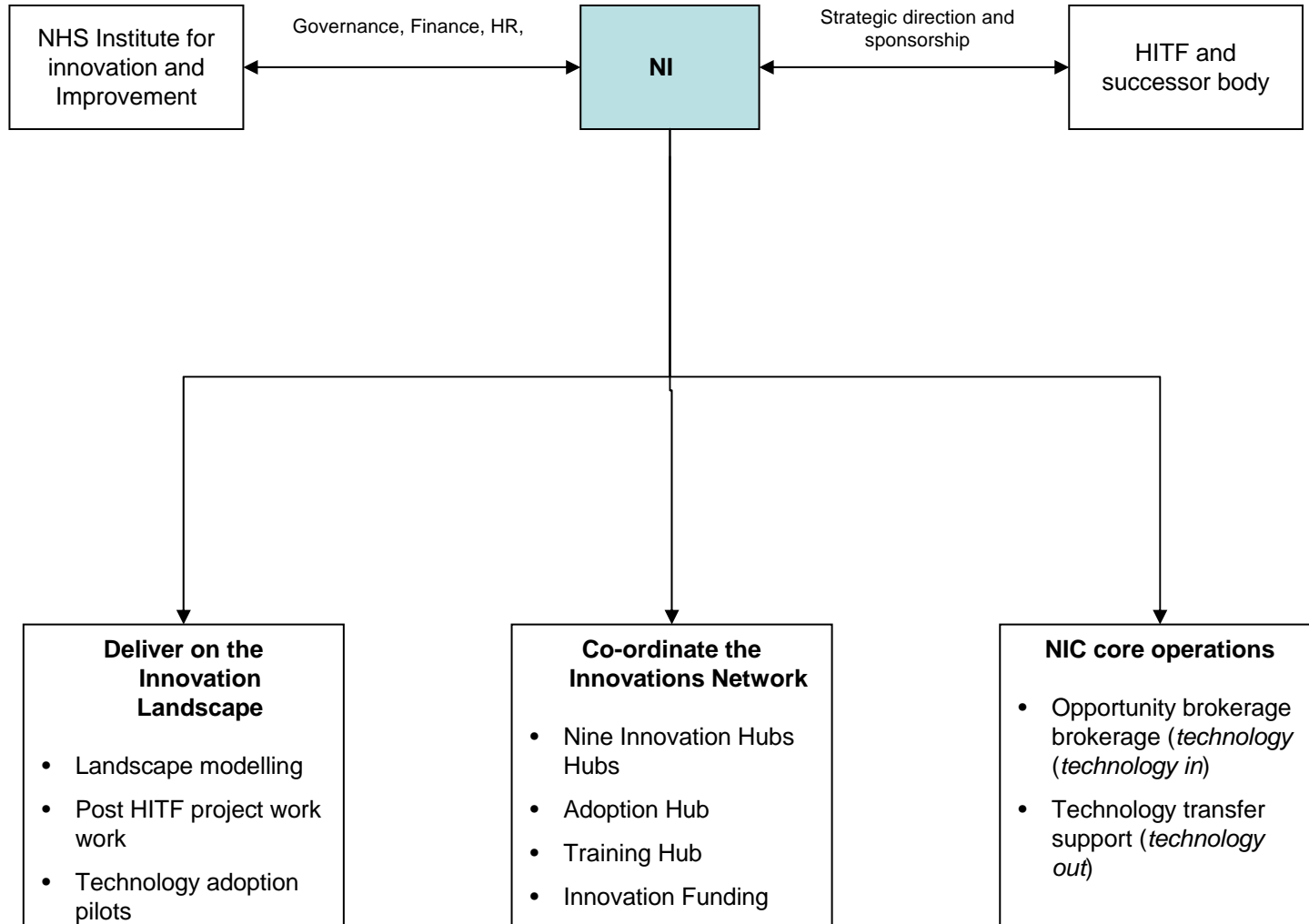
Goal 1

Making the Innovation System work better

Goal 2

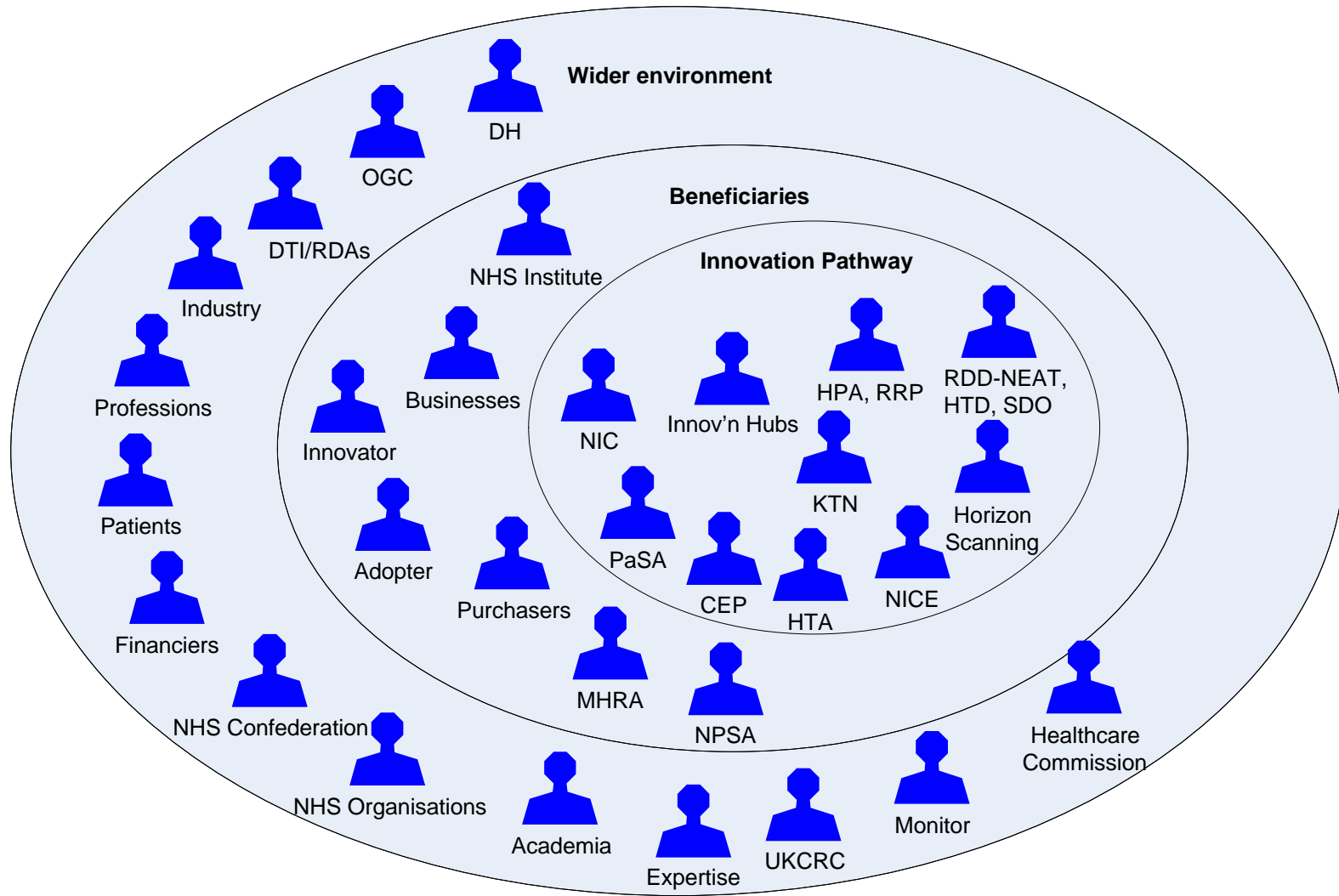
Creating opportunities for high impact innovations

Positioning the NIC and its outputs



Focus on: The Innovation Landscape

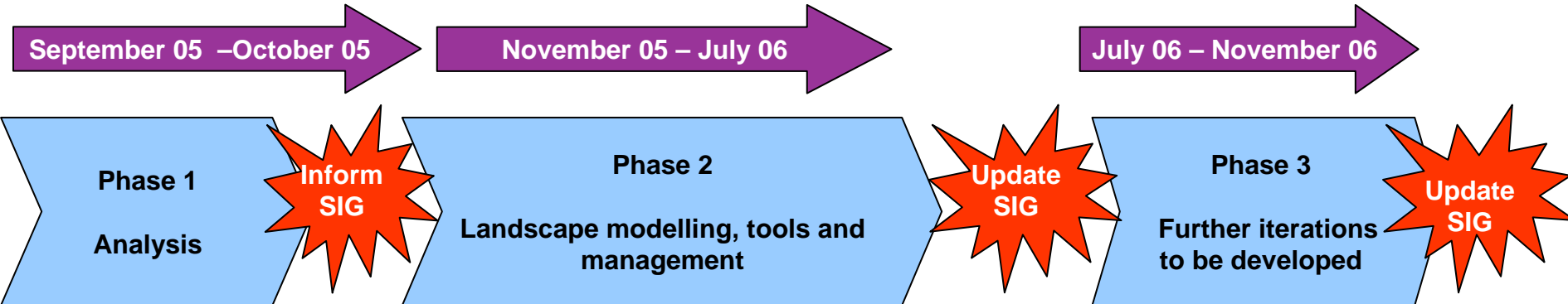
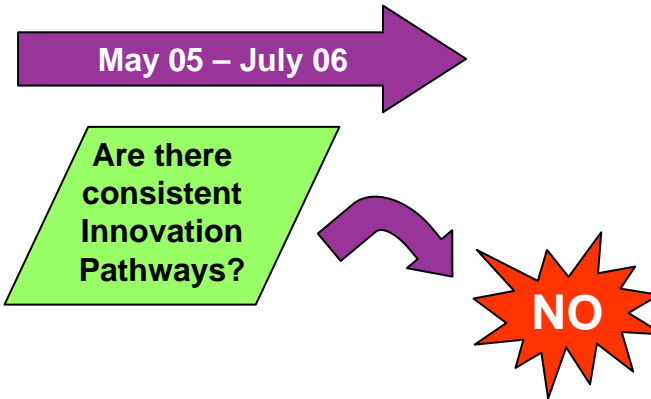
What is the Innovation Landscape?



Landscape is the generic term used to describe the interaction and interrelation of the various potential beneficiaries in the healthcare system

Focus on: The Innovation Landscape

What is the Innovation Landscape Project?



- What would an Innovation Landscape do?
- What are the essential parts of the the Innovation Landscape?
- Align stakeholders

- How should an innovation landscape work in principle?
- Map initial elements of innovation activity within the Landscape
- Deliver first iteration tools
- Compile improvement issues for resolution and recommendations

- Map other relevant elements of of Landscape
- Further Iterate tools
- Develop effective management proposals

Future progress and deliverables

Innovation Landscape Project, outputs to date:

- Version 1 of Innovation Assistant in Beta testing, testing, ready for NIC website launch mid September 2006
- Innovation related areas of landscape mapped
- Recommendations for improvements drafted

Case Study: Company A

- SME device company with 10 percent market penetration after 15 years of UK sales for a minimally invasive technology technology
- Primary problem has been the interaction interaction between evaluation proof and and rate of adoption into clinical practice practice
- Company in future would seek to base operations in other European territories, which it sees as having an adoption culture culture more receptive to innovation
- HITF deliverables most suited to assisting assisting the case: Signposting from the National Innovation Centre, early Innovation Funds, the Centre for Evidence-Evidence-based Purchasing and access to to networks

Work to date suggests that continued delivery against HITF recommendations and greater co-ordination of the landscape will substantially improve the system.

Future work and deliverables

Future work

- Prioritise with all sponsors additional projects for Innovation Landscape mapping
- Continue to develop the healthcare innovation network for faster technology uptake – uptake – ABHI, DH, DTI and NHS innovation networks and related activities
- Clarify innovation landscape project sponsorship and management

NIC, incorporating the Innovation Landscape project, deliverables

- NIC open for business: mid September 2006 – website, 'How to' guides, advice
- Training and Adoption hubs, open for Business: September 2006
- Innovation Fund, open for business: December 2006*
- Current ALB funding, via the NHS Institute, until March 2008

*Subject to receipt of necessary approval from the NHS Institute Board and the DH